

IT6000 Series HMI

High performance, smart HMI

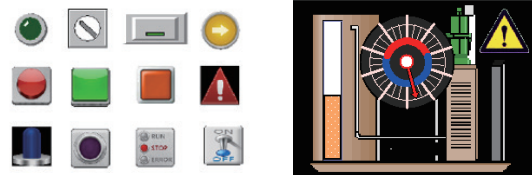
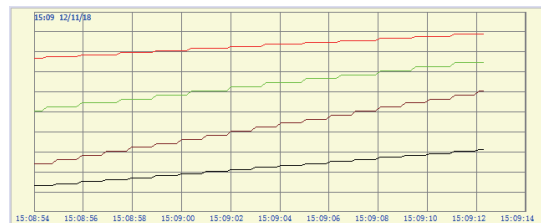
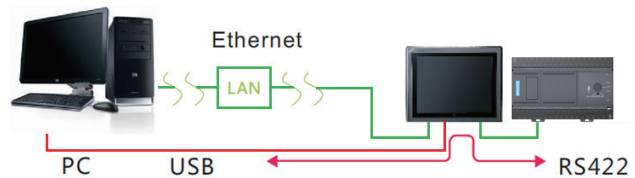
Features & functions

- 4.3", 7.0" and 10.1" models
- 24-bit true color display
- IP65 rating*¹
- Alarm bar/alarm list and event list
- Macro, flexible implementation of complex functions
- Recipe data import & export
- Data sample
- Trend chart display
- Up to 8 different languages can be edited in the text labels library, such as Chinese, English, Korean, Russian, Thai etc
- Maximum of 3 serial ports and 1 Ethernet port
- USB device port: program and/or firmware upload, historical data download from/to PC
- USB host port: access to U-disk, mouse, keyboard, printer etc
- Supports Ethernet (MODBUS TCP), RS485/RS422/RS232 (Modbus RTU)
- Security: 12 passwords, 12 users, 6 level authorities
- InoTouch Editor functions:
 - Extensive gallery/icons
 - Offline & online simulation

*1 Front side, when assembled in an electrical panel



Pass through communications function:
the HMI acts as a converter to connect between the PC and PLC, thus the PC can directly access the PLC via the HMI, which facilitates debugging



Built-in multiple communication protocols suitable for third-party PLCs such as Siemens, Mitsubishi, Omron, Panasonic, Delta, Fatek, etc

PC-based software: InoTouch Editor
easy programming tool
supports Win10/Win7/WinXP

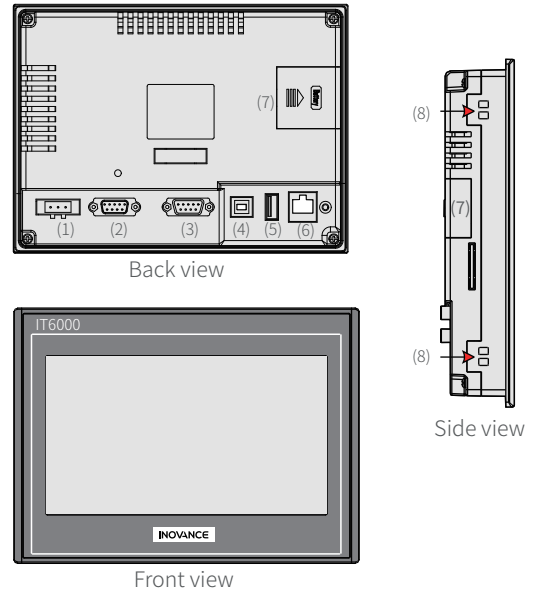


Specifications

Model: ITXXXXT/E-INT		IT6043T	IT6070T	IT6070E	IT6100E
Dimensions	Height	[H]: 102 mm	[H]: 146 mm	[H]: 146 mm	[H]: 213 mm
	Width	[W]: 128 mm	[W]: 200 mm	[W]: 200 mm	[W]: 271 mm
	Depth	[D]: 35 mm	[D]: 42 mm	[D]: 42 mm	[D]: 40 mm
Rated current		200 mA	250 mA	250 mA	300 mA
Power supply		24 Vdc (±20%)			
Battery		Lithium, 3.0 V 210 mAh			
Display section	Screen size	4.3"	7.0"	7.0"	10.1"
	Resolution	480 x 272	800 x 480	800 x 480	1024 x 600
	Display color	2 ⁴ color			
	Backlight adjustment	Standard			
	Backlight type	LED			
	Backlight life	30000 hrs			
User memory	CPU	Cortex A8 600 MHz			
	Flash	128 MB			
	SDRAM	128MB DDR3			
	Recipe storage	256 KB			
Built-in port	Serial port	COM1 (RS422/RS485) ¹ , COM2 (RS232), COM3 (RS485)	COM1 (RS422/RS485)	COM1 (RS422/RS485), COM2 (RS232), COM3 (RS485)	
	Ethernet port	N/A	N/A	RJ45	
	USB (host)	N/A	Type A		
	USB (device)	Type B	Type B		

*1 Only one physical port is available; COM1/2/3 can be selected through HMI InoTouch software

Product layout



Back view

Front view

Side view

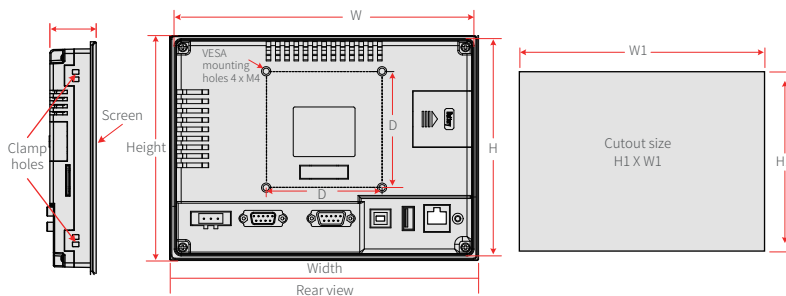
Terminal no.	Terminal name
(1)	Power port
(2)	COM1/COM3 serial port (DB9 female)
(3)	COM2 serial port (DB9 male) ²
(4)	USB device (type B)
(5)	USB host (type A) ³
(6)	Ethernet port (RJ45) ⁴
(7)	Battery cover
(8)	Clamp hole

*2 Not available in IT6043T and IT6070T

*3 Not available in IT6043T

*4 Not available in IT6043T and IT6070T

Dimensions



HMI model	Display screen size	External dimensions height x width x depth (mm)	Recommended cutout size	
			H1 (mm)	W1 (mm)
IT6043T	4.3"	102 x 128 x 35	93	119
IT6070T	7.0"	146 x 200 x 42	138	192
IT6070E				
IT6100E	10.1"	213 x 271 x 40	201	259

Accessories list

Model	Function description	Part no.
IT5-USB-CAB	The common USB programming cable for the HMI has a USB type A male connector on one side and a USB type B male connector on the other side, and a length of 2 m	15041123
IT5-H2U-CAB	The HMI-PLC communications cable allows connection of an HMI to an Inovance PLC. The connector is DB9 male and the cable length is 3 m	15041140

For more information, please contact our local offices.

INOVANCE

Hong Kong SAR (export office)
Tel: +852 2751 6080
info@inova-automation.com

South Korea-Seoul
Tel: +82 (0)2-3489-8850
info@inova-automation.com

India
Head Office Chennai
Tel: +91 (0) 44 4380 0201
Ahmedabad Tel: +91 (0) 79 4003 4274
Mumbai Tel: +91 (0) 22 4971 5883
Delhi Tel: +91 (0) 11 4165 4524
Sales Network in Kolkata, Bengaluru, Coimbatore, Hyderabad, Pune
info.inovaindia@inova-automation.com

Germany-Stuttgart
Tel: +49 (0) 7144 8990
sales.de@inovance.eu

Italy-Milano
Tel: +39 (0) 2268 22318
sales.it@inovance.eu

France-Bordeaux
Tel: +33 (0) 5594 01050
sales.fr@inovance.eu

Turkey-Istanbul
Tel: +90 (0) 21 6706 1789
info.turkey@inova-automation.com